

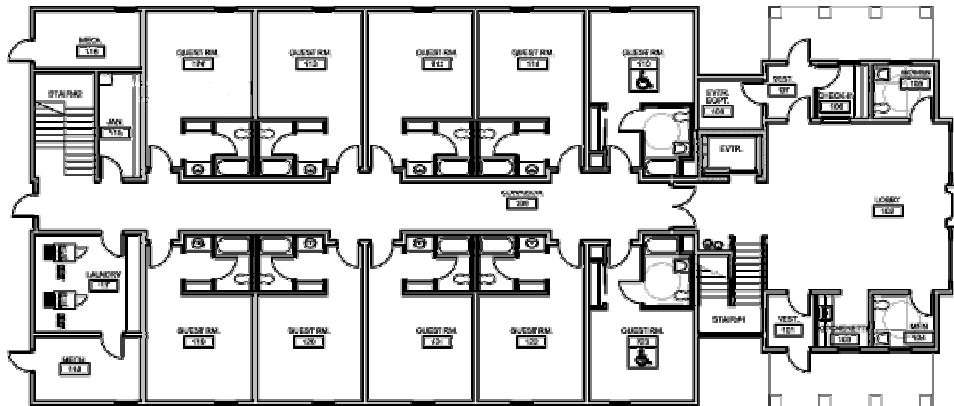
# The INN

AT MEADOWKIRK

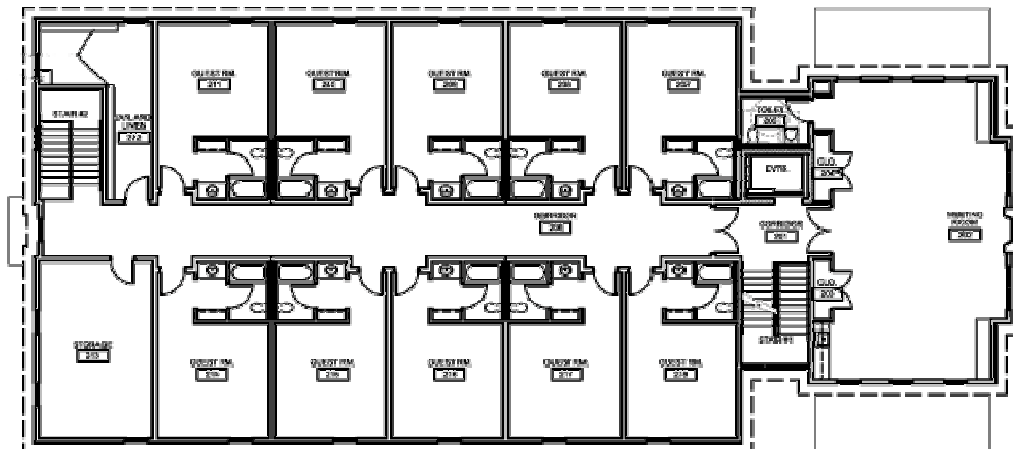


Expected to open by the end of 2008, The Inn’s elegantly simple décor will provide additional lodging and meeting space for retreat groups wishing to experience the atmosphere of peaceful community that surrounds Meadowkirk. The 20 handicap-accessible guests rooms will each have a queen bed, an extended length twin bed and a private bath—making them perfect for individuals (in either single or double occupancy) or small families. A conference room on the 2nd floor will offer meeting space for approximately 50 people.

The Inn’s central location makes an easy walk to The Stone Barn (chapel/meeting room), The Dining Room, and The House.



Ground Floor



Second Floor